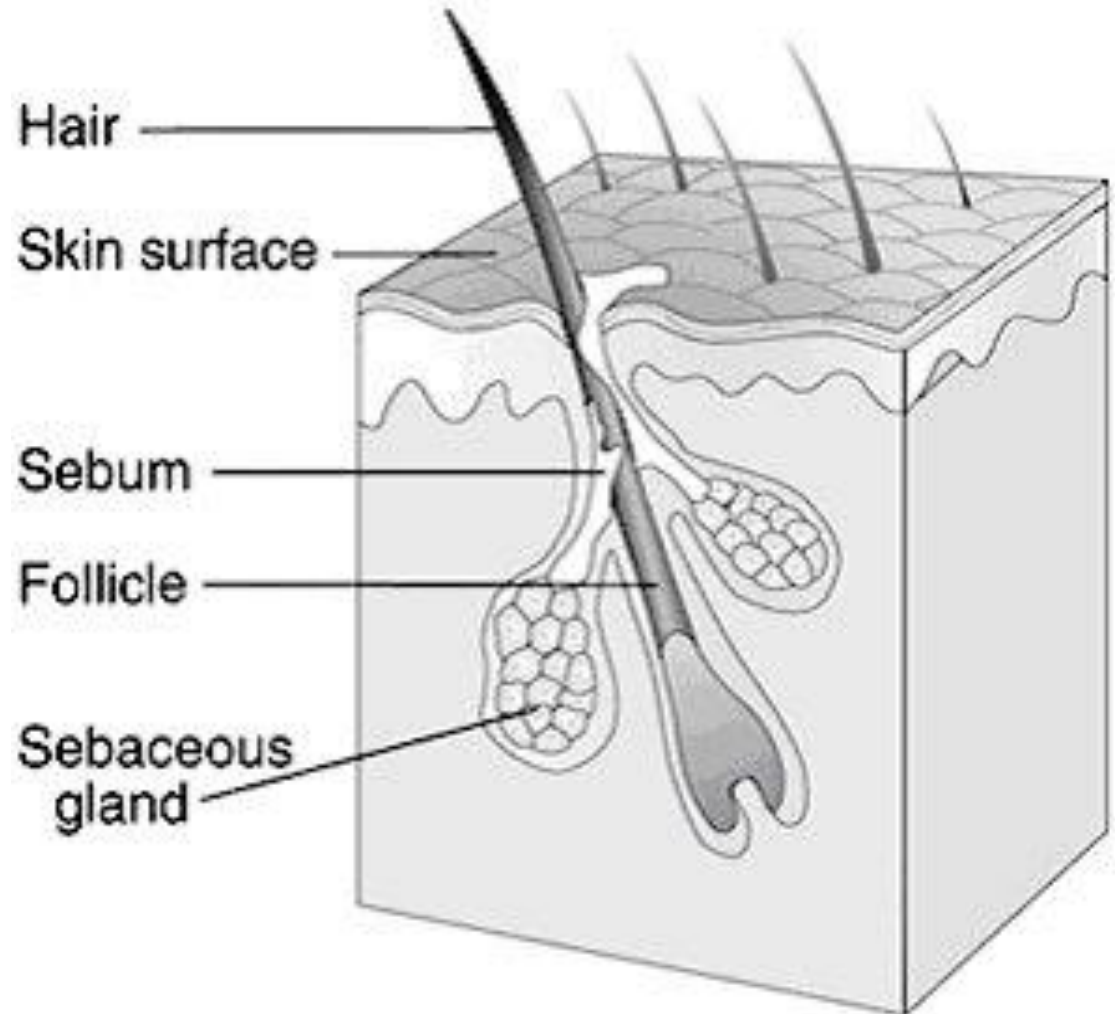


Disorders of Sebaceous Glands

Dr. Amal Alerebi

Disorders of Sebaceous Glands

1. Acne.
2. Rosacea.

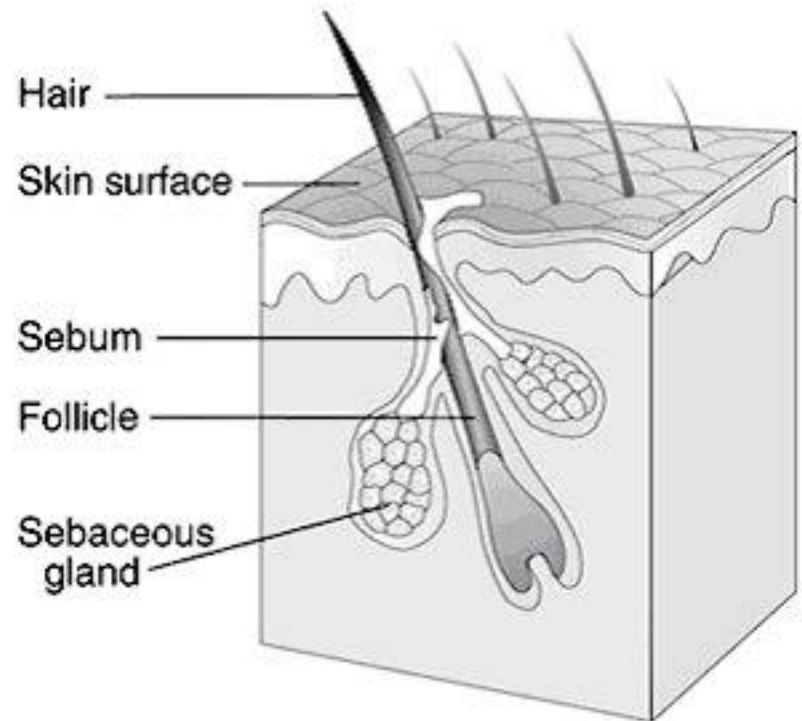


Acne vulgaris

Acne Vulgaris is

a disorder of pilosebaceous follicles .

Characterized by polymorphic eruption including papules, nodules, pustules and cysts.

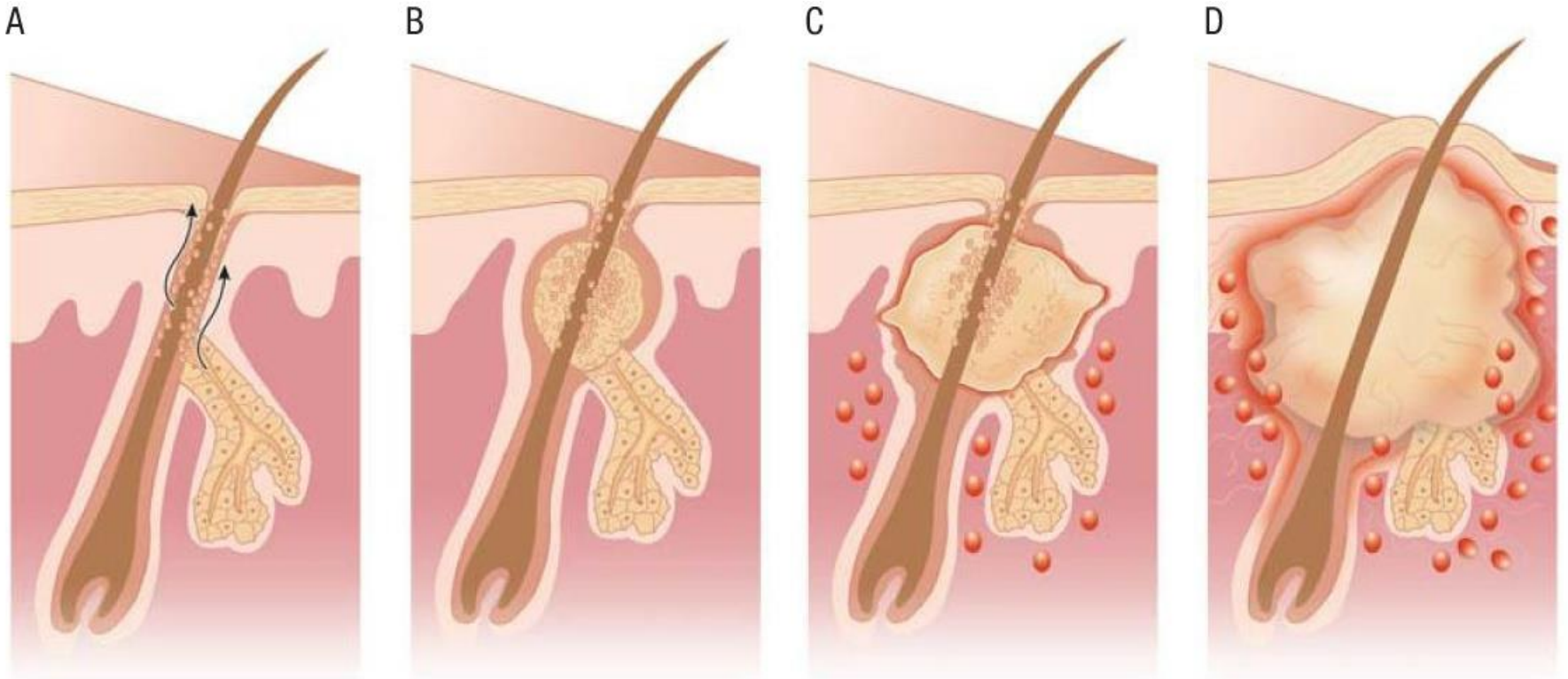


- It classically seen during adolescence , affects the skin of face and upper part of trunk.
- Pathognomonic skin lesion of acne is comedones

Acne Etiopathogenesis

1. Increased sebum production.
2. Propionobacterium acne.
3. Hyperkeratinization of PS duct.
4. Inflammation.

Acne Etiopathogenesis



1. Increased sebum.
2. Propionobacterium acne.

3. Hyperkeratinization of PS duct.
4. Inflammation.

Clinical features

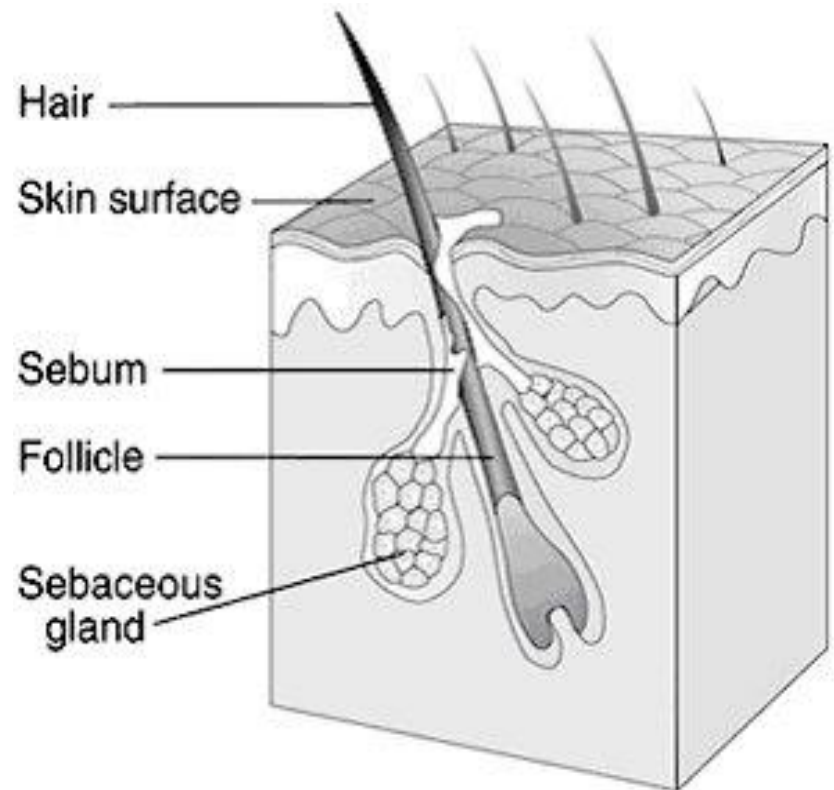
❑ Non-inflammatory skin lesion.

Comedones

- open black head
- closed white head

❑ Inflammatory skin lesion.

- Papules.
- Pustules
- Nodules.
- Cysts.
- Scarring





A



B



C



D



E

(A) Normal follicle; (B) open comedone (blackhead);
(C) closed comedone (whitehead); (D) papule; (E) pustule.

Closed comedon whitehead

Open comedon blackhead



Clinical types of acne

1. Neonatal acne
2. Infantile acne
3. Acne fulminans
4. Acne Conglobata.
5. Acne mechanica.
6. Acne excoriée.
7. Occupational acne.
8. Acne cosmetica.
9. Tropical acne.
10. Drug-induced acne.

Neonatal acne

appear at 2 wks of age , resolve spontaneously,
comedons are absent.



Infantile acne

presents at 3 – 6 months of age, comedons formation, may leads to scarring.



Acne fulminans

ulcerative lesions, scarring, sys. Symptoms (arthralgias, myalgia, bone pain, wt. Loss, Hsmegaly, fever, leukocytosis, high ESR)



Acne Conglobata.

Sever nodulocystic acne, healing with keloid scar.



Acne mechanica.

Mechanical obstruction of PS outlet



Acne excoriée.

Young women , ?? psych. Component



Occupational acne.



Acne cosmetica.



Tropical acne.



Drug-induced acne

corticosteroids, anabolic steroids, iodides & bromides, phenytoin and lithium



Nodulocystic Acne



Acne scars



Acne Treatment

TOPICAL

- 1) Benzoyl peroxide (2.5% - 10%).
- 2) Topical antibiotics.
 - A. Erythromycine.
 - B. Clindamycine.
- 3) Topical **retinoids**.
 - A. Tretinone (Retin-A)
 - B. Isotretinoin (Isotrex)
 - C. Adapalene (Differin)
- 4) Azelaic acid (20%).

SYSTEMIC

- 1) Oral Antibiotics.
- 2) Retinoids.
- 3) Hormonal

Isotretenoïn

- Synthetic derivative of vitamin A (13 cis retinoïc acid)
- Indicated in nodulo-cystic acne, acne conglobata or patients who not respond to treatment
- Reduce sebum production, decrease follicular keratinization, antiinflammatory effect
- Dose 0.5-1 mg /kg/day for 4-6 months

- **SIDE EFFECTS**

- **Teratogenicity** (C\I) in women of child-bearing age
- Dryness of skin & m.m
- Arthralgia & myalgia
- Hyperlipidemia & TG
- Benign ICH

Rosacea

- Rosacea is a chronic inflammatory disorder affecting the skin of face characterized by one or all of these lesions erythema , telangiectasia, papules, and pustules but no comedones. Rosacea mor common in females but more sever in males.

Rosacea



Clinical features

There are four subtypes of rosacea:

- Erythemato-telangiectatic.
- Papulo-pustular.
- Phymatous.
- Ocular rosacea.

- Erythematotelangiectatic
- Recurrent erythema-----permanente erythema-----telangiectasias
- Alae nasi , nose & cheeks.

Rosacea 1st. Stage.



Papulo-pustular Rosacea:

- permanent erythema-----telangiectasias----
-----papules, pustules---nodules.

Rosacea 2nd. Stage



- Phymatous Rosacea:

Rhinophyma:

it is bulbous swelling of nose due to over growth of nose soft tissues and hyperplasia of nasal seb. glands

Rosacea 3rd. Stage



Ocular Rosacea

Physical findings include,

- Blepharitis,
- Conjunctivitis,
- Keratitis,
- Styes,
- Chalazia,
- Corneal neovascularization and ulceration

D.D OF **Rosacea**

- **Acne Vulgaris**
- **Seborrheic dermatitis**
- **Lupus erythematosus**

Rosacea Treatment



Topical therapy

- Topical metronidazole.
- Topical anti-acne therapy.
- Topical steroids : C / I

Systemic therapy

- Tetracyclins.
- Erythromycine
- Retinoids

Thank You