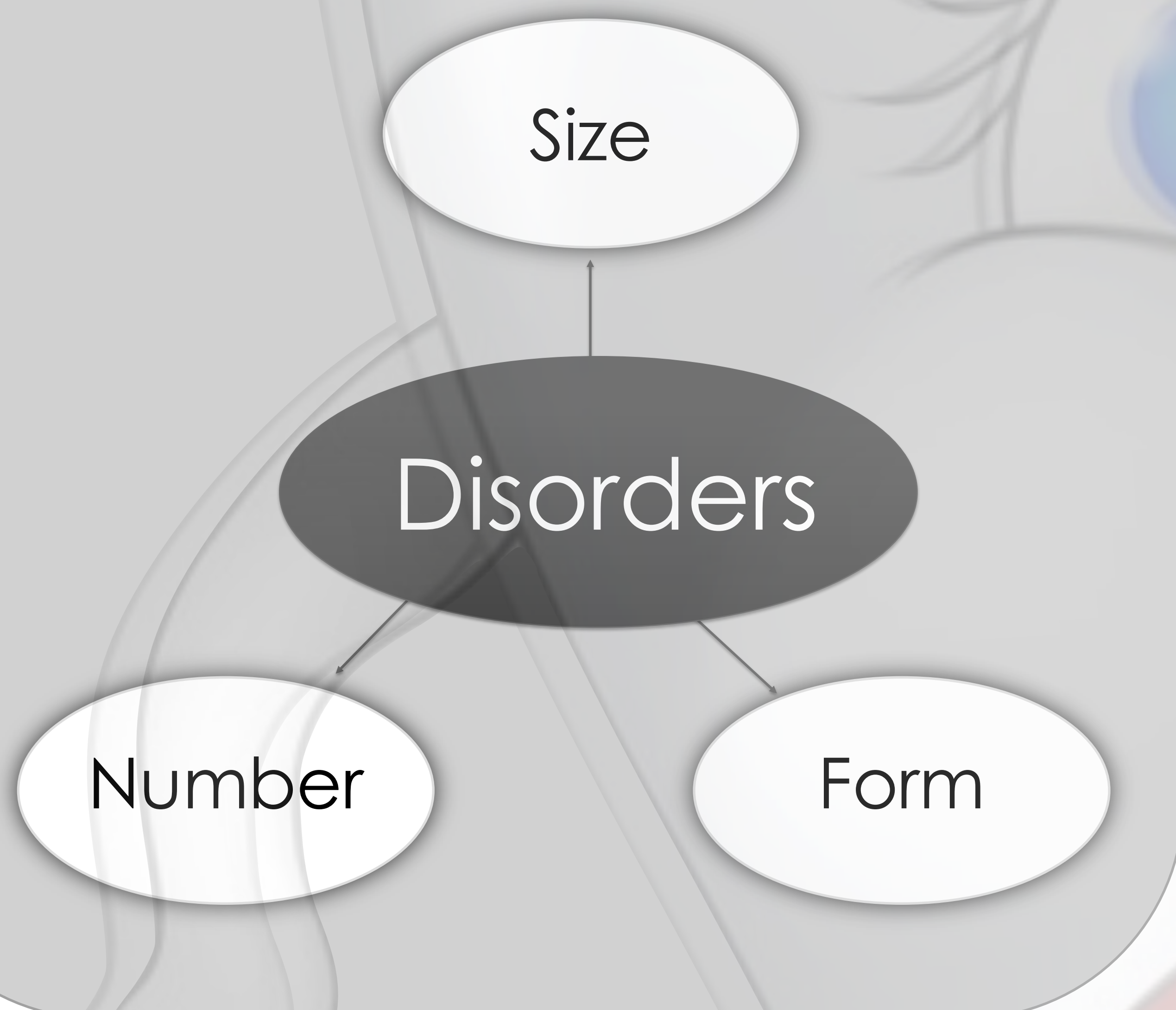


Introduction

Developmental Anomalies are abnormalities or defects due to interference with normal growth and fetal differentiation.(1)

Their prevalence varies greatly with disorders of occlusion being the most common(1)

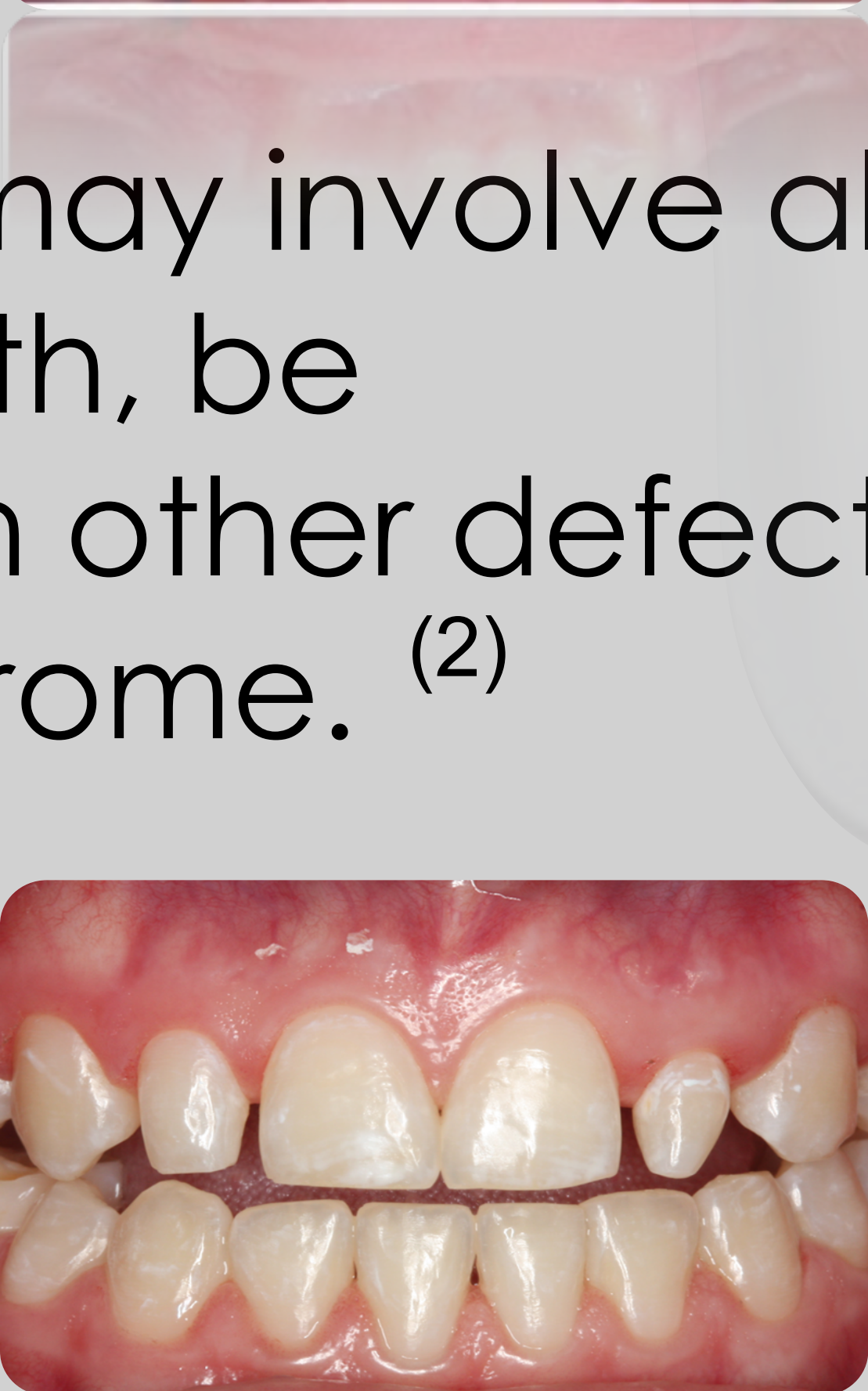


Disorders of the size

-1 Macrodontia.



2-Microdondia.



- ❖ Both of which may involve all or only few teeth, be associated with other defect like Down syndrome. (2)

Disorders of the number

1. Anodontia

A - partial anodontia

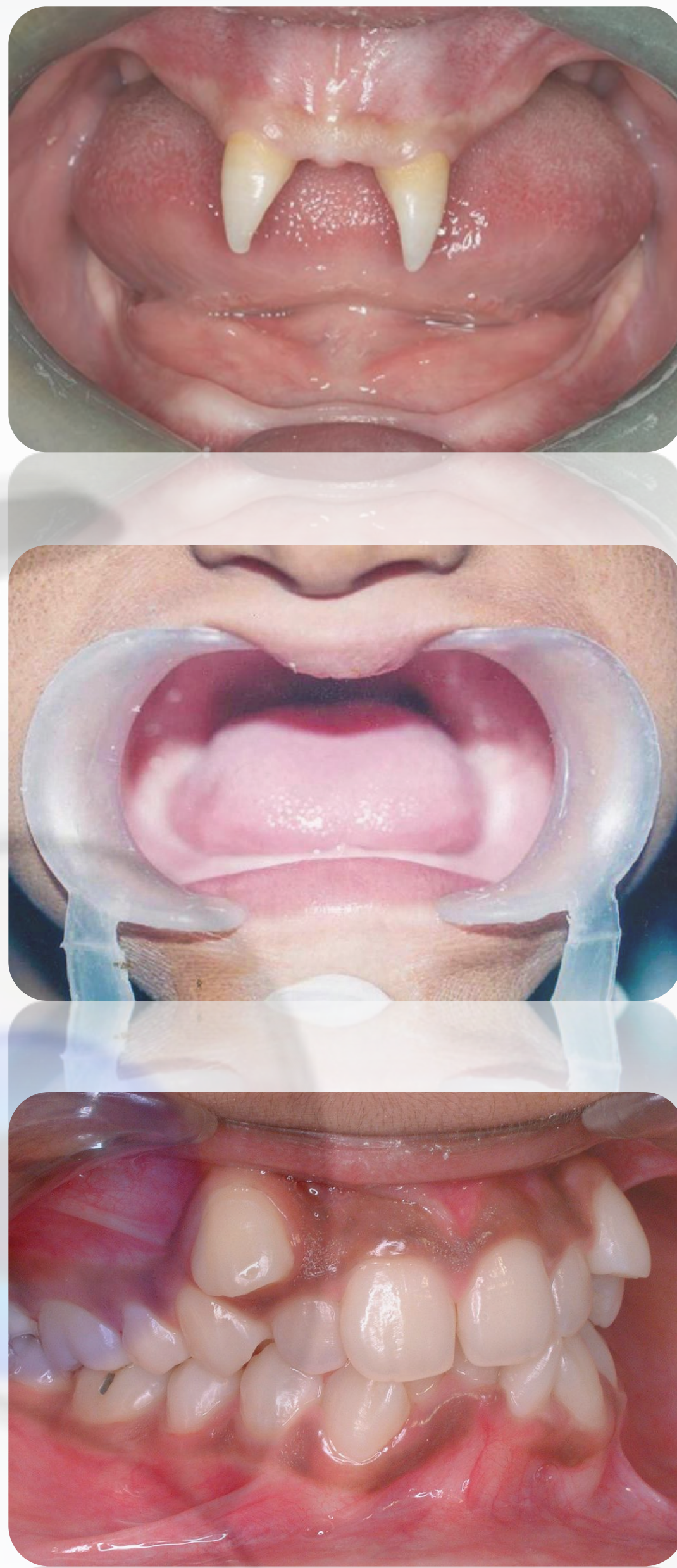
More common, especially in third molar, and may be symmetrical(2)

B- complete anodontia

Rare and affects males as females are carriers. (2)

2- Supernumerary teeth

Usually single tooth and prevent adjacent teeth from eruption(2)



Disorders of the form

1- Dilaceration

- severe curving in the root ————— Trauma

2- Fusion

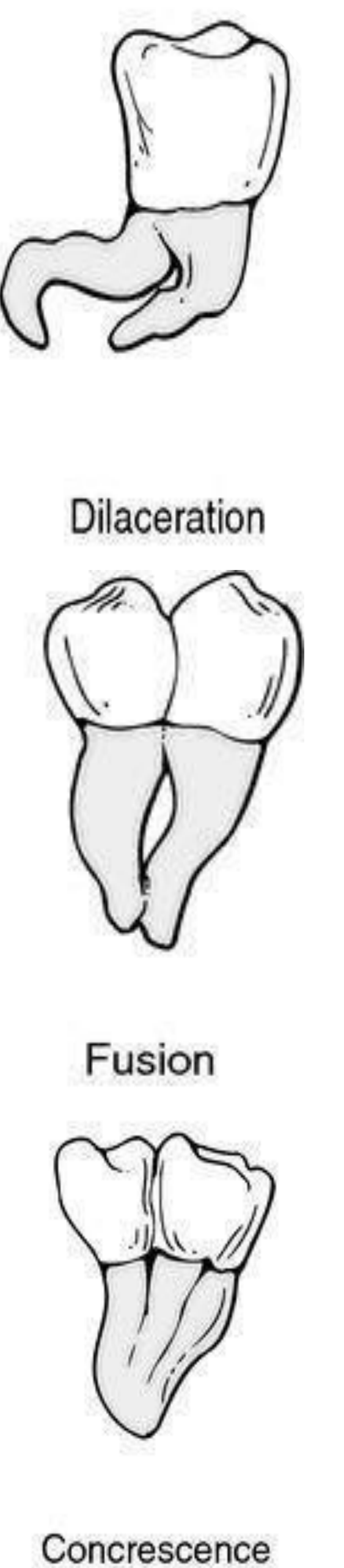
- Union of dentin and enamel .

3- Gemination

- Partial development of two teeth from single tooth bud .

4- Concrescence

Roots of two or more teeth united by cementum.



Conclusion

Dental anomalies are developmental disorder, caused by genetic and or environmental factors, that show great variety.

References

1. Eversole, L. (2014). *Clinical Outline of Oral Pathology*. 4th ed. Shelton: People's Medical Publishing House.
2. Shrestha, A., Marla, V., Shrestha, S. and Maharjan, I. (2016). Developmental anomalies affecting the morphology of teeth – a review. *RSBO*, 12(1), p.68.