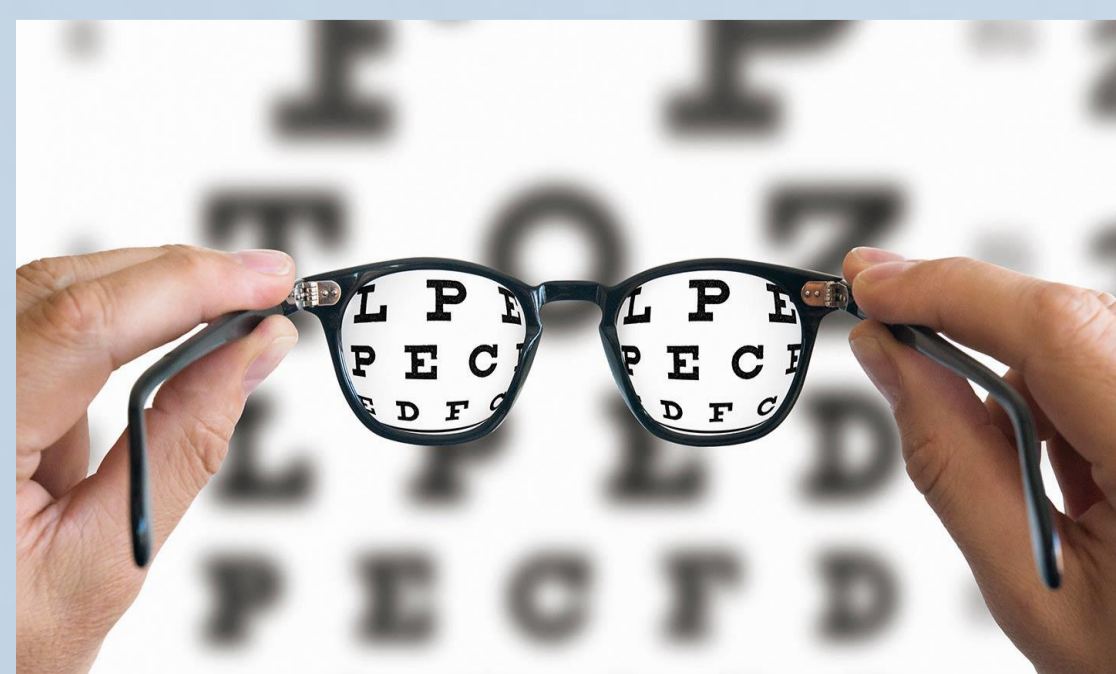


What is the sickle cell anemia

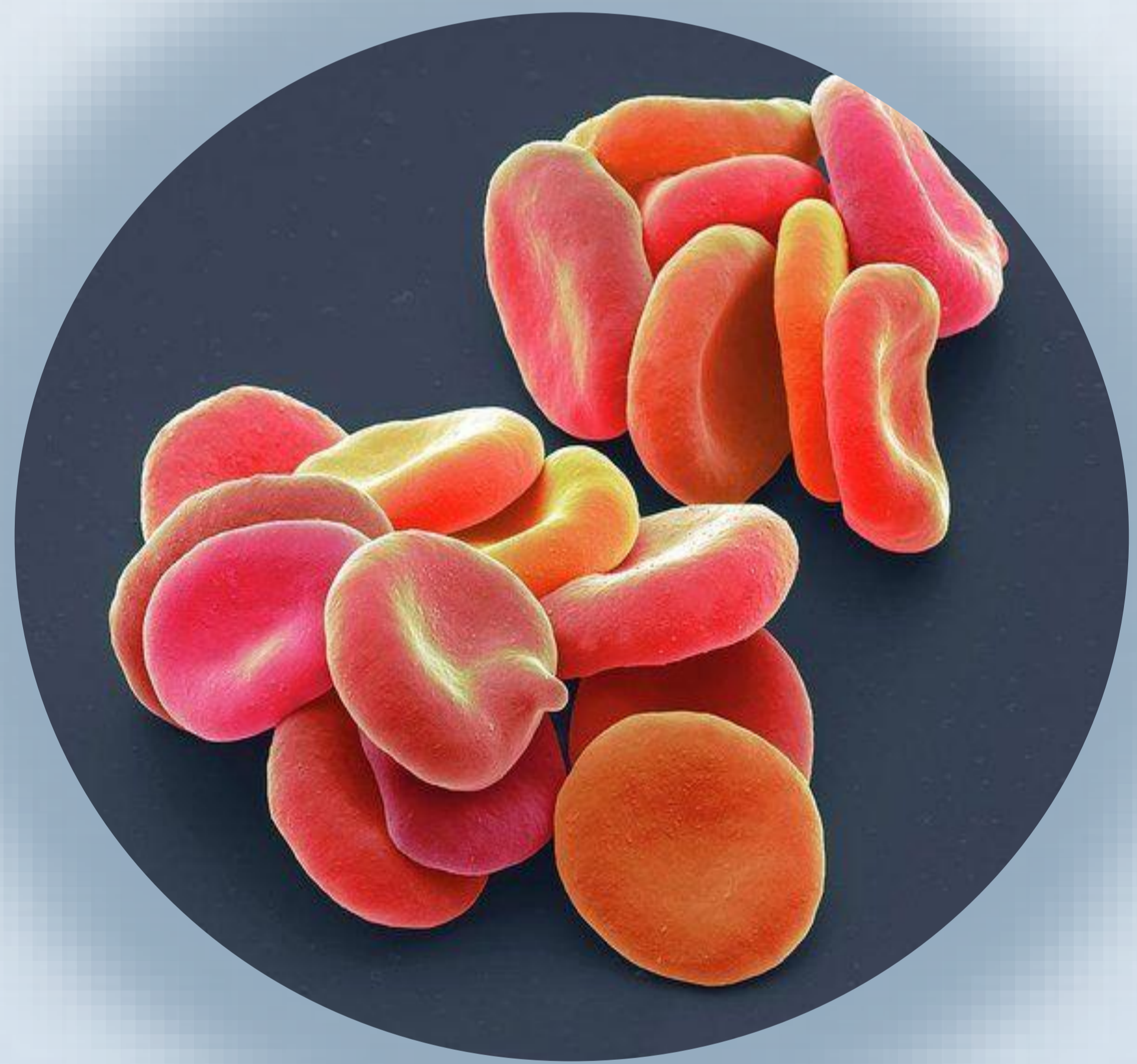
a type of disease characterized by production of defective hemoglobin , HBA composed of two like pairs of globin chains, each with its own heme group, Normal adult red cells contain mainly HbA ($\alpha_2\beta_2$), Sickle cell anemia is caused by a point mutation at the sixth position of the β -globin chain(1)

The manifestations of SCD (1)

- ✓ *painful bone crises (in children)*
- ✓ Frequent infection e.g. (spleen)
- ✓ swelling of hands and feet
- ✓ Episodes of pain (crises)
- ✓ Vision problems
- ✓ Delayed growth
- ✓ Chronic hypoxia
- ✓ Vision problems
- ✓ Sever anemia
- ✓ Fever



The treatment of SCD



Medications used to treat sickle cell anemia
Hydroxyurea(2)

The oral manifestations of SCD

- ✓ Dental Caries
- ✓ pallor of the o.c
- ✓ Hypodontia
- ✓ malocclusion
- ✓ periodontist
- ✓ Pulp necrosis



The conclusion

SCD is an inherited of anemia, the manifestation of this disease effect all the body , and characterized by Sever anemia and crises

References

- 1-Helaly, M., and A. H. Abuaffan. "Association between Sickle Cell Disease and Dental Caries among Sudanese Children." *J Mol Imag Dynamic* 5.120 (2015): 2.
- 2-Rang, Humphrey P. "Rang and Dale's pharmacology." *Churchill Livingstone Elsevier* 727 (2007).