



ANATOMY OF DIGESTIVE SYSTEM



➤ Presented by :



Raghad Mustafa



Belgaseem Bobaker



Malak Akraim



ILLOS:-

- 1. Define the digestive system**
- 2. Describe the organ of digestive system**
- 3. Mention the blood supply of each organ of digestive system**
- 4. Explain accessory organ of digestive system**



➤ **Definition:-**

It is an organ system within humans which takes in food, digests it and absorb energy and nutrients, and expels the remaining waste as feces.





❖ **Major organs of digestive system:**

1) MOUTH

2) PHARYNX

3) ESOPHAGUS

4) STOMACH

5) SMALL INTESTINE

6) LARGE INTESTINE





  **Accessory of digestive organs**

❖ Liver

❖ Gallbladder

❖ Pancreas

❖ Salivary gland

➤ ANATOMY OF DIGESTIVE SYSTEM

- **MOUTH:** it is the first part of alimentary canal that receive food and produce saliva



➤ TONGUE:

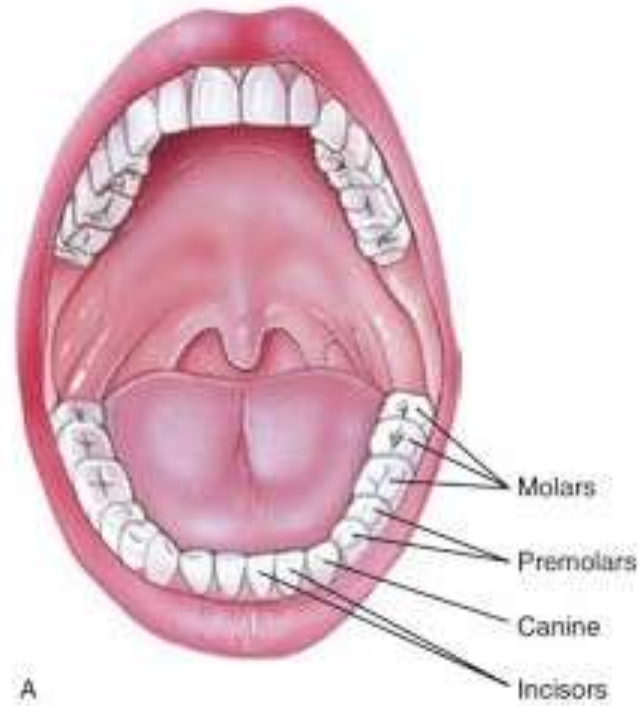
- ✿ Is a muscular organ covered by mucous membrane



➤ TEETH:-

➤ Primary teeth

➤ Permanent teeth



➤ THE PHARYNX

➤ The pharynx is the part of the throat that is behind the mouth and nasal cavity and above the esophagus and the larynx, or the tubes going down to the stomach and the lungs.



➤ **pharynx is divided into 3 parts**

❖ Nasopharynx

❖ Oro pharynx

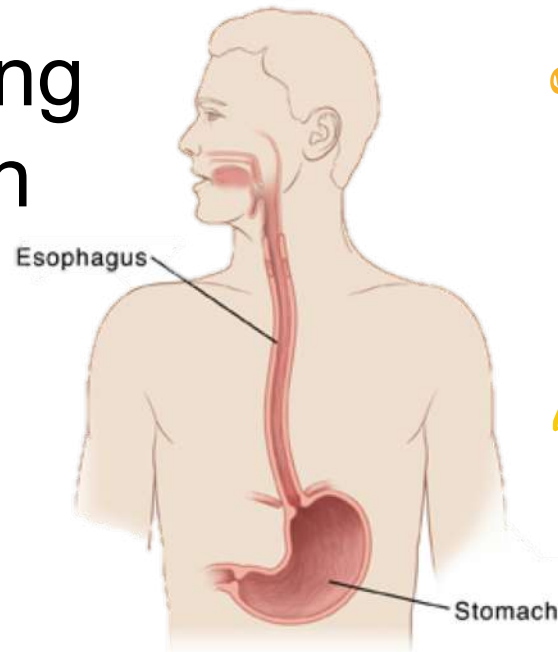
❖ Laryngo pharynx



➤ THE ESOPHAGUS

The esophagus is a muscular tube connecting the throat (pharynx) with the stomach.

- Length: 25 cm
- Diameter: 2 cm



➤ STOMACH

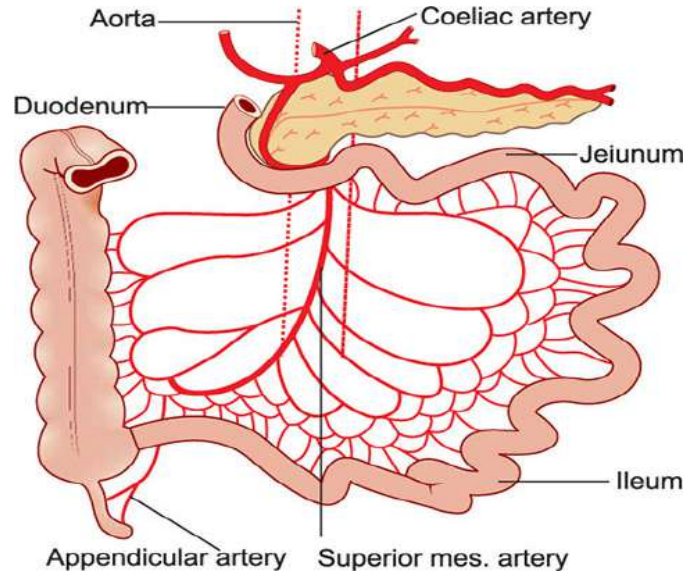
- The stomach is a muscular organ located on the left side of the upper abdomen.



➤ The Small Intestine

➤ The Small Intestine Or Small Bowel is the Part of the Gastrointestinal Tracto Between The Stomach And The Large Intestine,

- Length – 3m – 5m.
- Diameter -2.5-3 cm
- 1 inch.



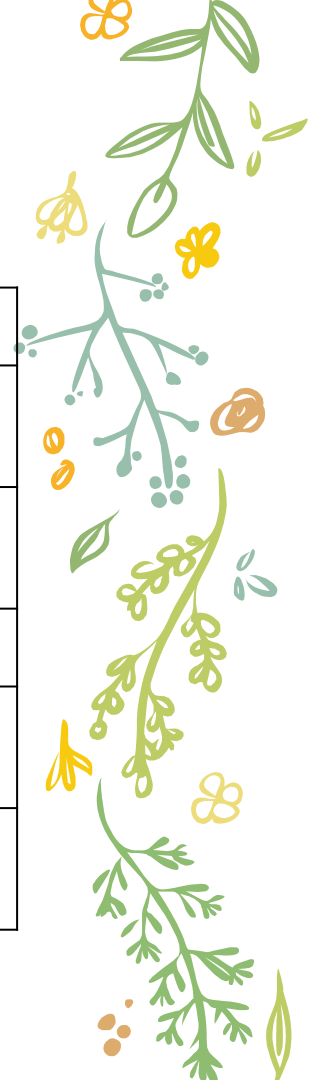
➤ **LARGE INTESTINE**

Water is absorbed here and the remaining waste material is stored as feces before being removed by defecation



➤ BLOOD SUPPLY OF EACH ORGAN

ORGAN OF DIGESTIVE SYSTEM	Blood supply
MOUTH	(lingual artery) (external carotid artery)
ESOPHAGUS	(Esophageal arteries) (Inferior phrenic arteries)
STOMACH	(right and Left gastroepiploic artery)
SMALL INTESTINE	(the coeliac trunk) (the superior mesenteric artery)
LARGE INTESTINE	(the superior & inferior mesenteric artery)

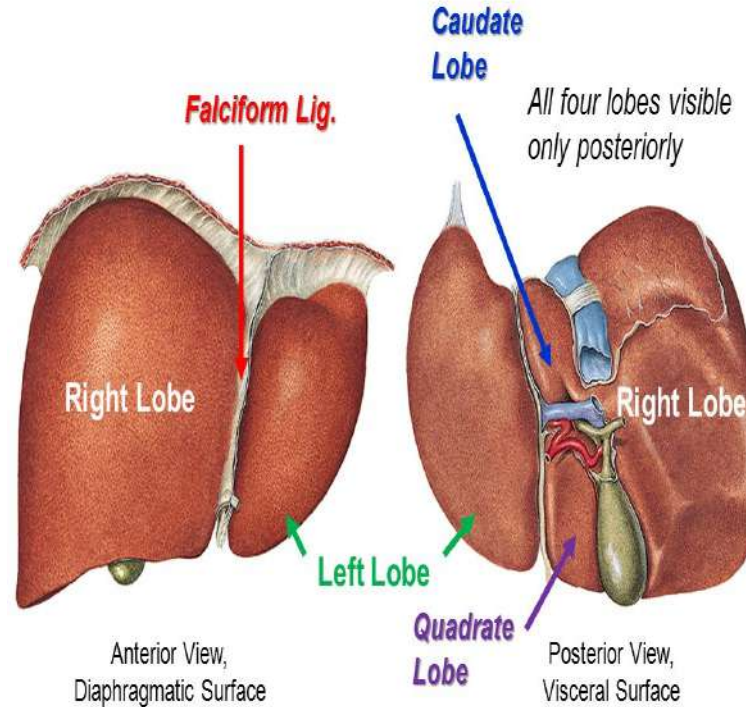


➤ Accessory of digestive organs

❖ Liver

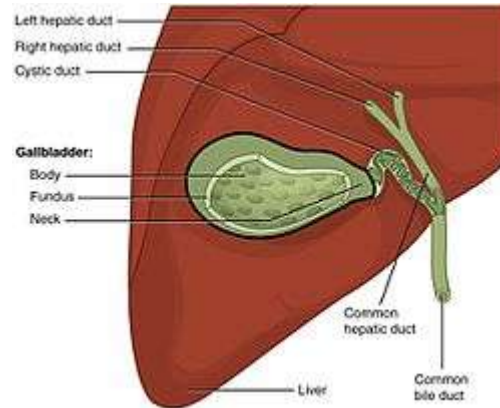
is an organ only found in vertebrates, detoxifies various metabolites, synthesizes proteins, and produces biochemical necessary for digestion

(4) Anatomical Lobes



Gallbladder

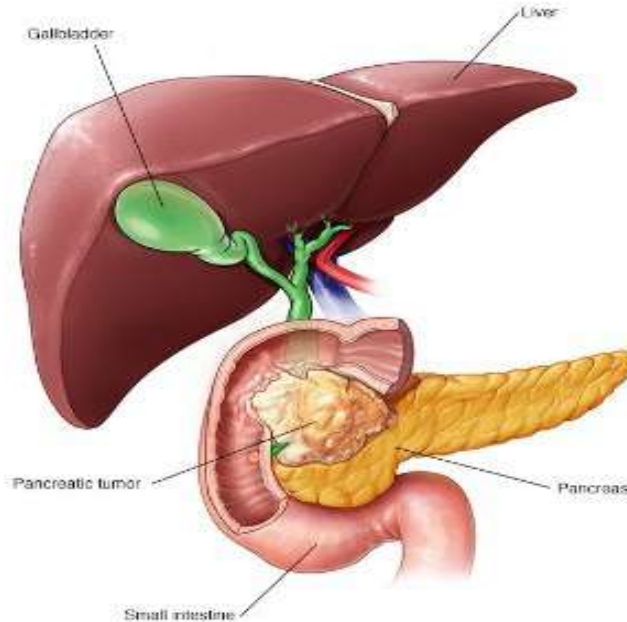
The Gallbladder Is A Small Hollow Organ Where Bile Is Stored And Concentrated Before It Is Released Into The Small Intestine



❖ Pancreas

- ❖ The pancreas is a glandular organ in the digestive system and endocrine system of vertebrates.

Length: 15 cm or 6 inch

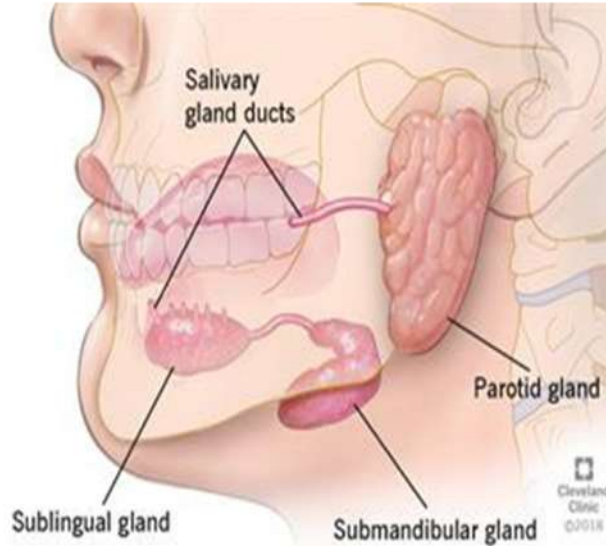


© NIPED FOUNDATION FOR MEDICAL EDUCATION AND RESEARCH. ALL RIGHTS RESERVED.



❖ Salivary gland

- Parotid
- Submandibular glands
- Sublingual glands





REFERENCE

- <https://www.slideshare.net/Dipaliharkhani21/anatomy-and-physiology-of-the-digestive-system-90499453>
- <https://www.kenhub.com/en/library/anatomy/stages-of-swallowing>



THANK YOU
FOR LISINING

